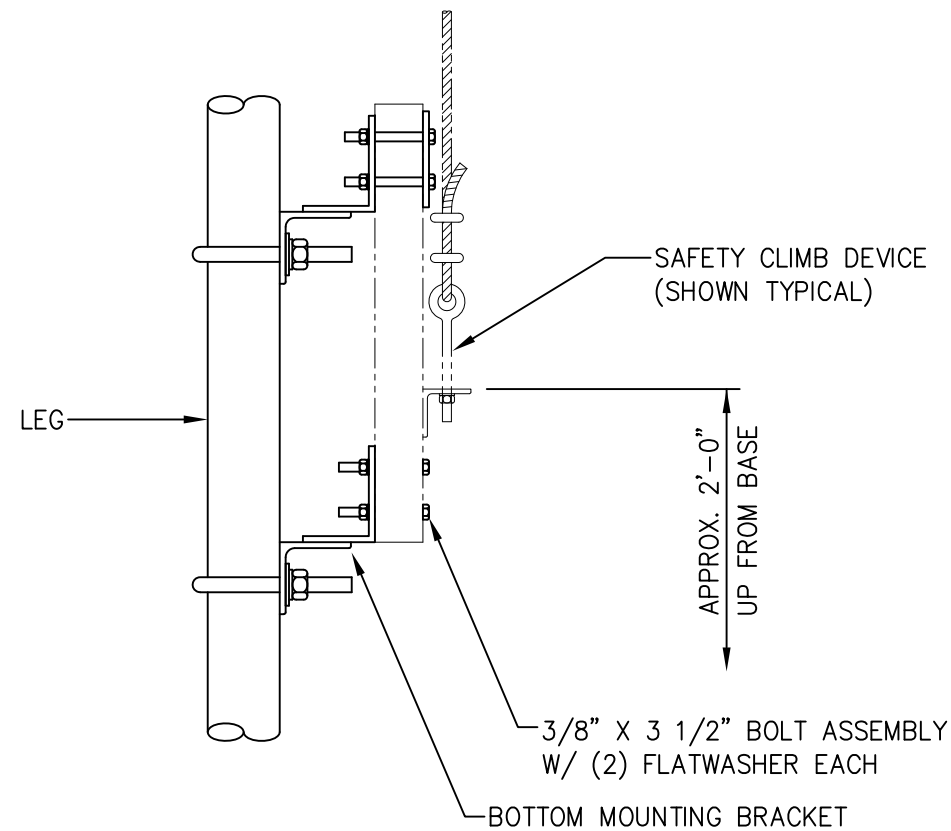


**PLAN**



**ELEVATION**

**EACH KIT CONSISTS OF:**

- (2) BOTTOM MOUNTING BRACKET
- (1) BACKUP PLATE
- (2) 5/8" U-BOLT ASSEMBLY FOR MOUNTING TO LEG
- (6) 3/8"  $\phi$  X 3 1/2" BOLT ASSEMBLY
- (12) 3/8"  $\phi$  FLATWASHER

**BOTTOM MOUNTING BRACKET KITS**

KIT NUMBER	LEG DIAMETER	5/8" U-BOLT ASSEMBLY	3/8" BOLT ASSEMBLY	3/8" $\phi$ FLATWASHER	BOTTOM MOUNTING BRACKET	BACKUP PLATE	KIT WEIGHT
C30011054	1 1/4"	C40034041	C40024012	C40031001	CW00346	CS00167	16.2#
C30011055	1 1/2"	C40034020	C40024012	C40031001	CW00346	CS00167	16.4#
C30011056	1 3/4"	C40034021	C40024012	C40031001	CW00346	CS00167	16.5#
C30011031	2"	C40034022	C40024012	C40031001	CW00049	CS00167	17.0#
C30011032	2 1/4" OR 2 3/8"	C40034023	C40024012	C40031001	CW00049	CS00167	17.1#
C30011033	2 1/2"	C40034024	C40024012	C40031001	CW00049	CS00167	17.2#
C30011034	2 3/4" OR 2 7/8"	C40034025	C40024012	C40031001	CW00049	CS00167	17.3#
C30011035	3"	C40034026	C40024012	C40031001	CW00049	CS00167	17.4#
C30011036	3 1/4"	C40034027	C40024012	C40031001	CW00050	CS00167	18.5#
C30011037	3 1/2"	C40034028	C40024012	C40031001	CW00050	CS00167	18.6#
C30011038	3 3/4"	C40034029	C40024012	C40031001	CW00050	CS00167	18.8#
C30011039	4"	C40034030	C40024012	C40031001	CW00050	CS00167	18.9#
C30011040	4 1/4"	C40034031	C40024012	C40031001	CW00050	CS00167	19.0#
C30011041	4 1/2"	C40034032	C40024012	C40031001	CW00051	CS00167	20.3#
C30011042	4 3/4"	C40034033	C40024012	C40031001	CW00051	CS00167	20.4#
C30011043	5"	C40034034	C40024012	C40031001	CW00051	CS00167	20.5#
C30011044	5 1/4" - 5 9/16"	C40034035	C40024012	C40031001	CW00052	CS00167	21.9#
C30011057	5 3/4"	C40034044	C40024012	C40031001	CW00052	CS00167	22.0#
C30011058	6"	C40034064	C40024012	C40031001	CW00052	CS00167	22.0#
C30011053	6 1/4"	C40034068	C40024012	C40031001	CW00052	CS00167	22.1#
C30011045	6 5/8"	C40034036	C40024012	C40031001	CW00052	CS00167	22.3#
C30011059	6 3/4"	C40034093	C40024012	C40031001	CW00204	CS00167	23.2#
C30011050	7 OR 7 1/4"	C40034065	C40024012	C40031001	CW00204	CS00167	25.0#
C30011060	7 1/2"	C40034127	C40024012	C40031001	CW00204	CS00167	23.7#
C30011104	7 3/4"	C40034099	C40024012	C40031001	CW00204	CS00167	23.8#
C30011046	8 5/8"	C40034037	C40024012	C40031001	CW00053	CS00167	33.0#
C30011061	9 1/2" OR 9 5/8"	C40034130	C40024012	C40031001	CW01242	CS00167	29.3#
C30011047	10 3/4"	C40034038	C40024012	C40031001	CW00054	CS00167	35.4#
C30011048	12 3/4"	C40034039	C40024012	C40031001	CW00053	CS00167	34.9#
C30011049	14"	C40034040	C40024012	C40031001	CW00054	CS00167	36.9#
C30011051	16"	C40034042	C40024012	C40031001	CW00208	CS00167	42.6#
C30011052	18"	C40034043	C40024012	C40031001	CW00208	CS00167	43.5#

11	9/30/14	DPJ/ZAK	ADDED KIT FOR 9 1/2" & 9 5/8" O.D. LEGS.
10	5/22/14	KLE/EK	ADDED KIT FOR 7 1/2" O.D. LEG.
UNLESS OTHERWISE SPECIFIED		MATERIAL:	
ALL DIMENSIONS INCLUDE FINISHES AND ARE IN INCHES			
TOLERANCES: FRACTIONS $\pm$ 1/16"		TOLERANCES DO NOT APPLY TO RAW MATERIAL	
ANGLES $\pm$ 1/2 DEG.			
DECIMALS $\pm$ .010"			
9	10/10/11	DPJ/CE	ADDED KIT FOR 7 3/4" O.D. LEG.
8	7/26/11	DPJ/CHH	ADDED KIT FOR 6 3/4" O.D. LEG.
7	5/29/08	DPJ/ZAK	ADDED KIT FOR 6" O.D. LEG.
6	4/29/08	LRS/CE	ADDED KIT FOR 5 3/4" O.D. LEG.
5	3/03/08	LRS/ZAK	ADDED KIT FOR 6 1/4" O.D. LEG.
4	1/10/08	LRS/CE	CHANGED LEG DIAMETER FOR C30011044 KIT (WAS 5 1/2" OR 5 9/16")
3	12/27/04	DLW/DEL	ADDED KITS FOR 1 1/4" TO 1 3/4" O.D. LEGS.
2	3/3/04	KLE/DLW	ADDED KITS FOR 16" O.D. & 18" O.D. LEGS.
1	2/19/04	KLE/DLW	ADDED C30011050 & ADDED LEADING ZERO.
REV	DATE	DRW/CHK	DESCRIPTION



**CONFIDENTIAL**  
 This document and the information contained herein is the confidential trade secret property of Sabre Communications Corporation ("Sabre") and must not be reproduced, copied or used, in whole or in part, for any purpose without the prior written consent of Sabre.  
 © 2014 Sabre Communications Corporation. All rights reserved.

**SAFETY CLIMB  
 BOTTOM MOUNTING BRACKET**

DATE	4/11/02	SIZE <b>B</b>	DRAWING NO. <b>C30011-1</b>	REV <b>11</b>
DRAWN BY	KLE			
CHECKED BY	DWL	SCALE None	PAGE 1 OF 1	