

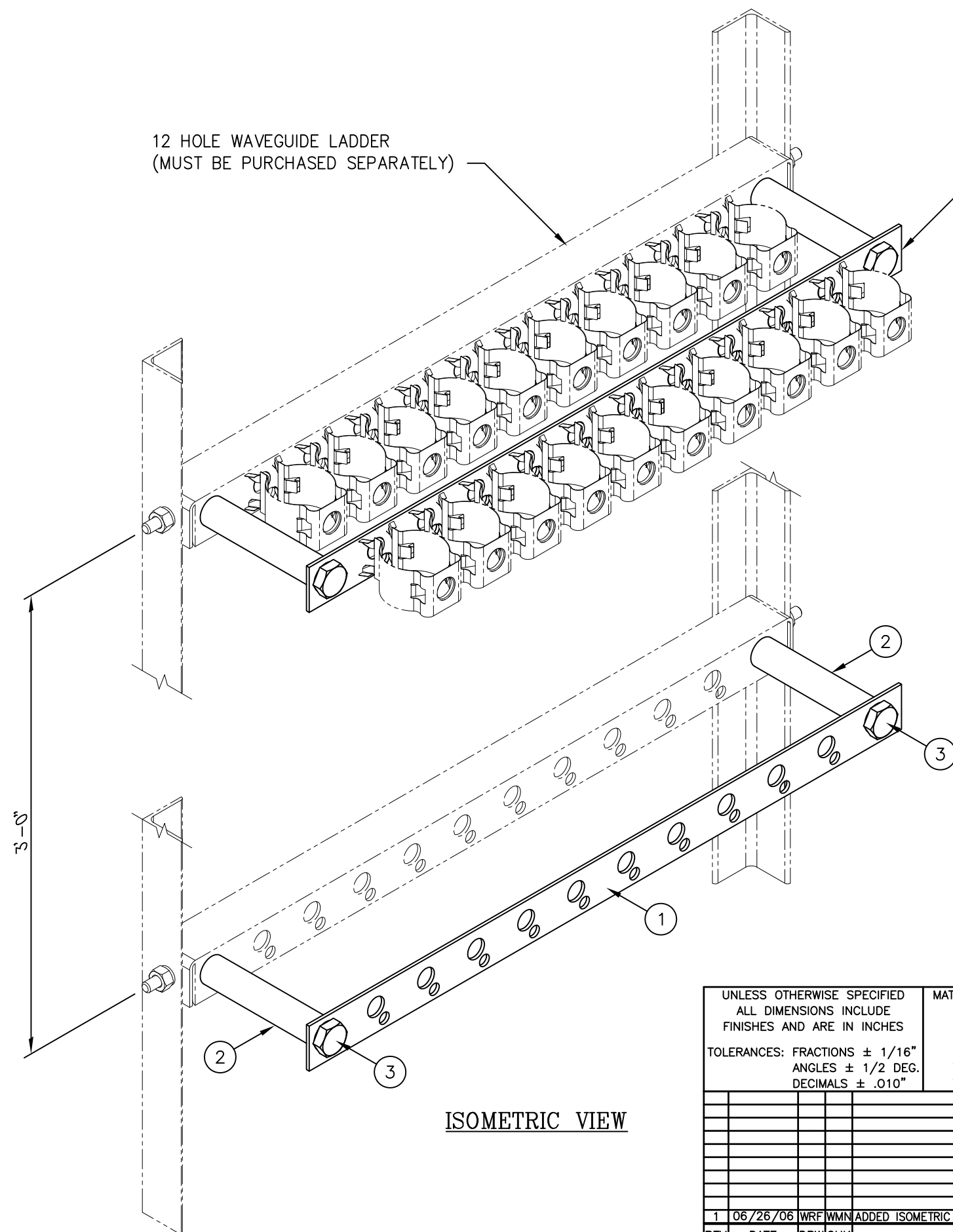


C20129007 10 ON 10 STACKER KIT (4 RUNGS)

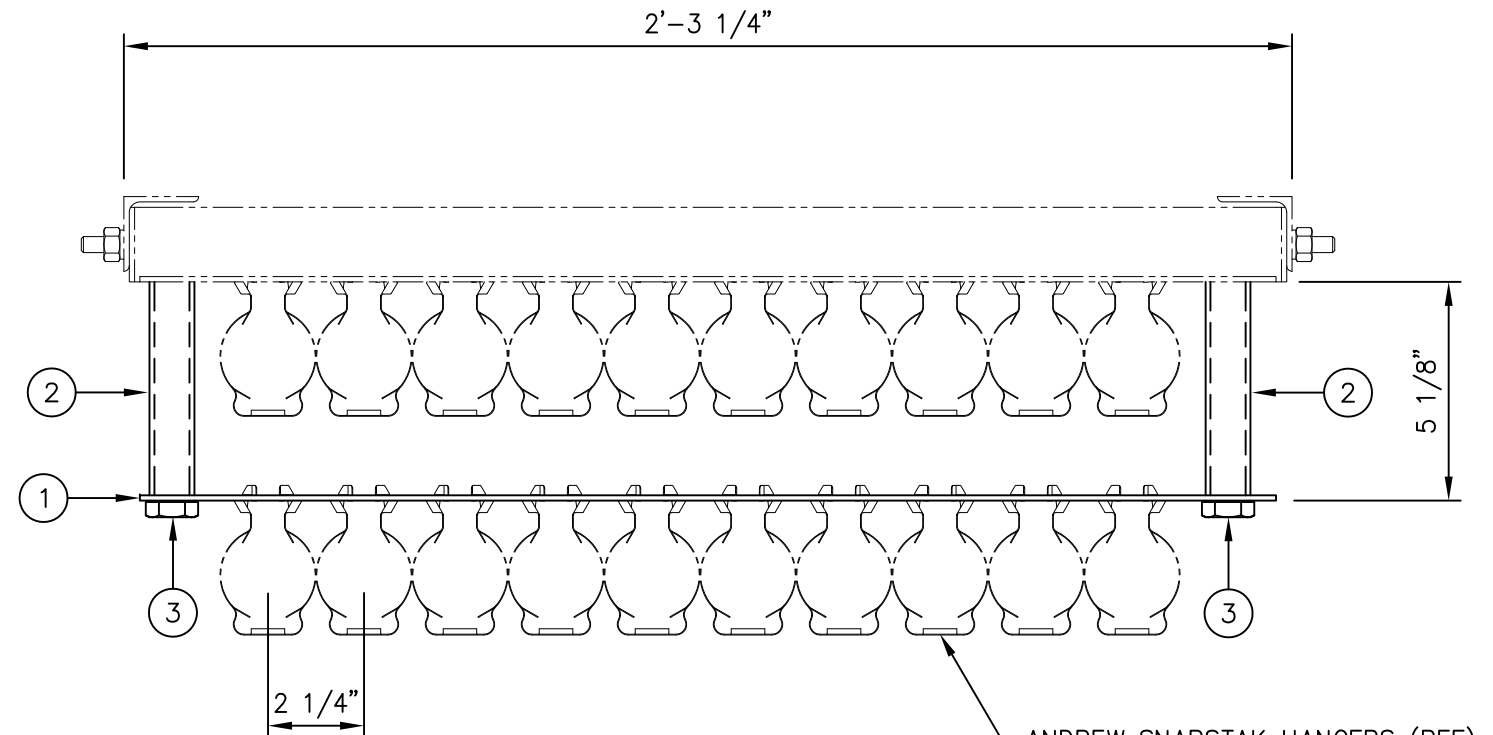
ITEM	QTY.	PART NO.	DESCRIPTION	WEIGHT
1.	4	CS00153	12 HOLE WAVEGUIDE LADDER STACKER PLATE	7
2.	8	CS00154	PIPE, SPACER 3/4 $\phi$ NOM. (SCH. 40) X 0'-5	4
3.	8	C40026038	BOLT ASSEMBLY, 5/8 $\phi$ X 6 1/2 A325	9
TOTAL WEIGHT				20

12 HOLE WAVEGUIDE LADDER  
(MUST BE PURCHASED SEPARATELY)

STANDOFF CAN SUPPORT AN  
ADDITIONAL TEN LINES PER LADDER



ISOMETRIC VIEW



PLAN VIEW

ANDREW SNAPSTAK HANGERS (REF)

**FIELD NOTE:**

THIS WAVEGUIDE STANDOFF ASSEMBLY IS NOT TO BE USED AS A CLIMBING APPARATUS.

UNLESS OTHERWISE SPECIFIED  
ALL DIMENSIONS INCLUDE  
FINISHES AND ARE IN INCHES  
TOLERANCES: FRACTIONS  $\pm 1/16$ "  
ANGLES  $\pm 1/2$  DEG.  
DECIMALS  $\pm .010$ "

MATERIAL:  
TOLERANCES DO NOT APPLY  
TO RAW MATERIAL



**CONFIDENTIAL**  
This document and the information  
contained herein is the confidential trade  
secret property of Sabre Communications  
Corporation ("Sabre") and must not be  
reproduced, copied or used, in whole or in  
part, for any purpose without the prior  
written consent of Sabre.  
© 2006 Sabre Communications Corporation.  
All rights reserved.

10 ON 10  
10 FT. WAVEGUIDE LADDER  
STACKER KIT (4 RUNGS)  
(FOR 12 HOLE RUNG - 7/16  $\phi$  & 3/4  $\phi$ )

REV	DATE	DRW	CHK	DESCRIPTION
1	06/26/06	WRF	WMN	ADDED ISOMETRIC VIEW

DATE	08/20/03	SIZE	B	DRAWING NO.	C20129007	REV	1
DRAWN BY	KLE	SCALE	None	PAGE	1 OF 1	CHECKED BY	DLW