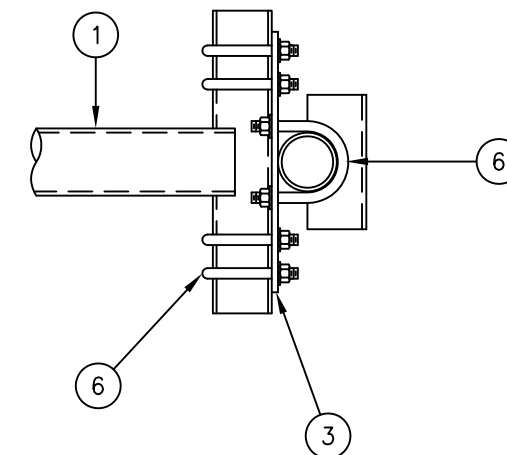
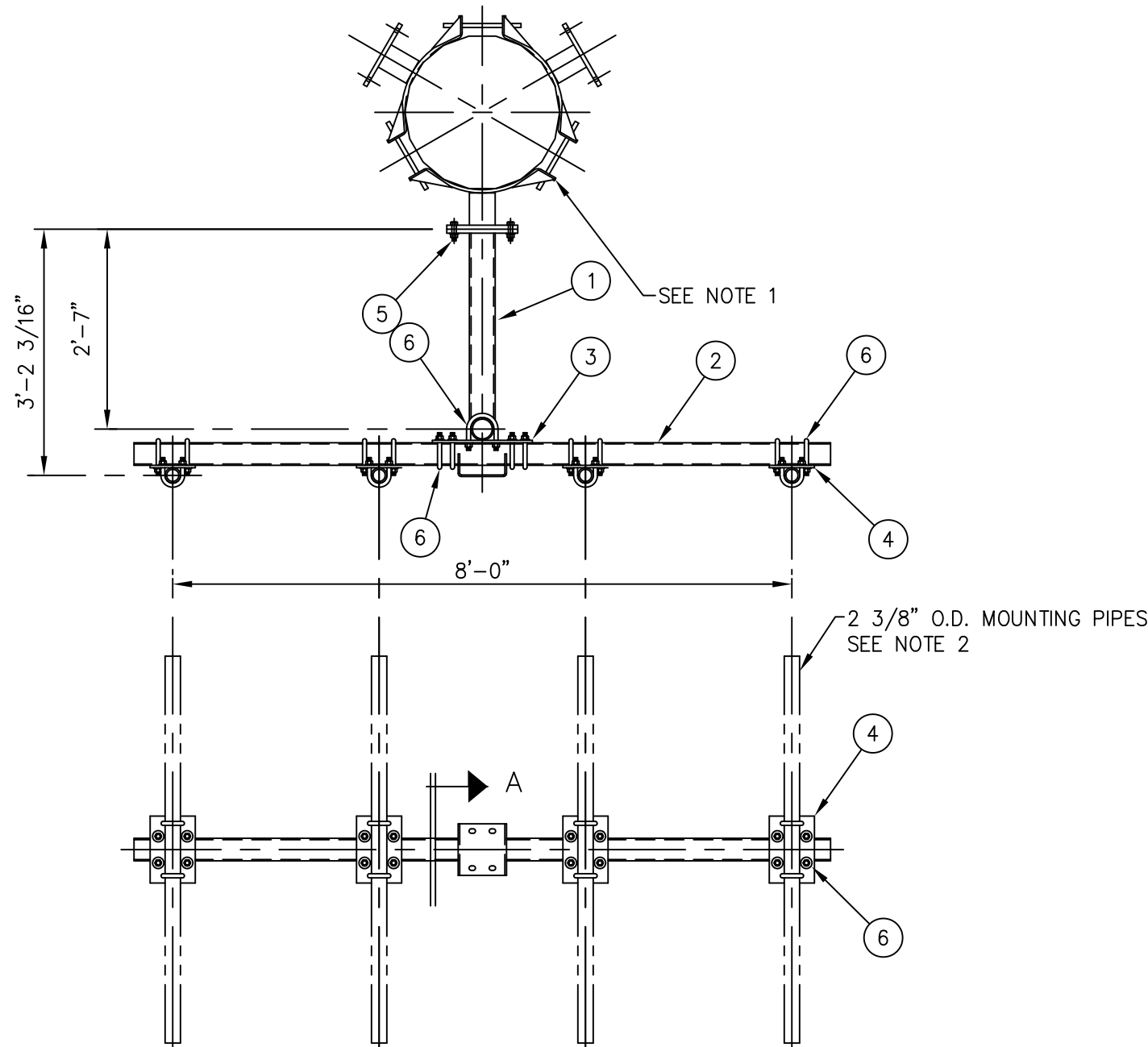




C10113112 T-ARM ASSEMBLY

ITEM	QTY.	DWG. NO.	DESCRIPTION	PART NO.
1.	1	CW00144	T-ARM WELDMENT	64.9#
2.	1	CW00087	SUPPORT PIPE	77.5#
3.	1	CS00038	T-ARM CROSSOVER PLATE	22.0#
4.	4	CS00071	PIPE CROSSOVER PLATE	32.0#
5.	4	C40026025	BOLT ASSEMBLY, 5/8"Ø X 2 1/2 A325	1.9#
6.	16	C40034028	U-BOLT ASSEMBLY, 5/8"Ø X 4 3/16 C/C	30.7#
APPROX. GALV. WEIGHT				229.0#



SECTION A-A

NOTES:

1. TRI-COLLAR MOUNTS MUST BE PURCHASED SEPARATELY.
2. 2 3/8" O.D. MOUNTING PIPE KIT MUST BE PURCHASED SEPARATELY.
3. QUANTITIES SHOWN IN LIST OF MATERIAL ARE FOR ONE (1) T-ARM ASSEMBLY ONLY.

UNLESS OTHERWISE SPECIFIED ALL DIMENSIONS INCLUDE FINISHES AND ARE IN INCHES		MATERIAL:	
TOLERANCES: FRACTIONS ± 1/16" ANGLES ± 1/2 DEG. DECIMALS ± .010"		TOLERANCES DO NOT APPLY TO RAW MATERIAL	
REV	DATE	DRW/CHK	DESCRIPTION
1	10/20/05	MLC/MC	ADDED SECTION A-A



CONFIDENTIAL
This document and the information contained herein is the confidential trade secret property of Sabre Communications Corporation ("Sabre") and must not be reproduced, copied or used, in whole or in part, for any purpose without the prior written consent of Sabre.
© 2014 Sabre Communications Corporation. All rights reserved.

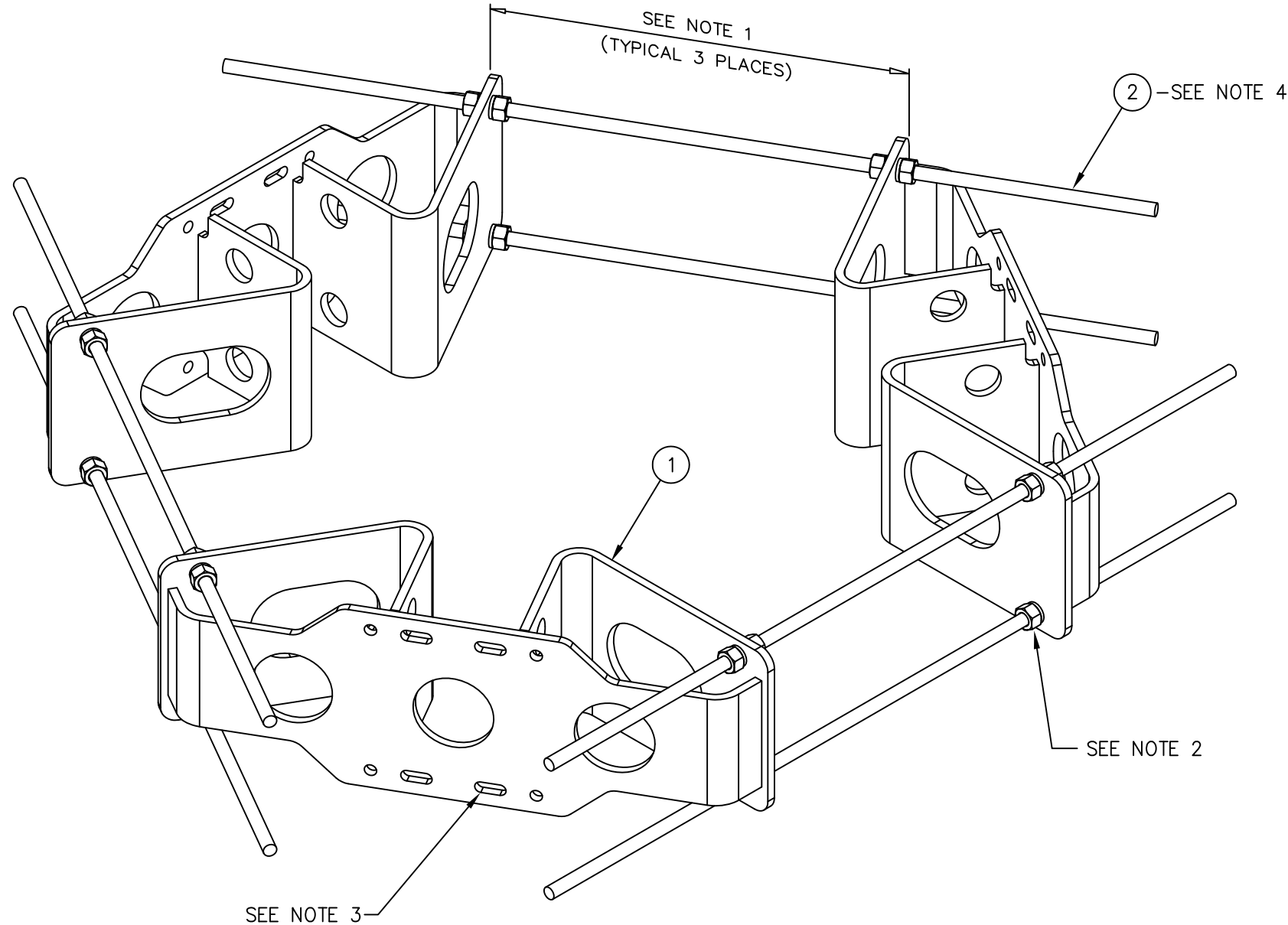
T-ARM ASSEMBLY
3'-0" ARM WITH 8'-0" FACE
(4) 2 3/8" O.D.
ANTENNA MOUNTING PIPES

DATE	8/11/04	SIZE B	DRAWING NO. C10113112	REV 1
DRAWN BY	MLC			
CHECKED BY	MC	SCALE None	PAGE 1 OF 1	



C10112301 TRI-COLLAR ASSEMBLY (12"-60" MONOPOLE)

ITEM	QTY.	PART. NO.	DESCRIPTION	WEIGHT
1.	3	CW00843	WELDMENT, TRI-COLLAR (12"-60" MONOPOLE)	294
2.	6	C40094010	THREADED ROD ASSEMBLY 3/4 X 4'-4"	36
TOTAL WEIGHT				330



ISOMETRIC VIEW

NOTES:

1. THIS DISTANCE MUST BE EQUAL IN ALL (3) THREE LOCATIONS TO ENSURE THE STRUCTURAL INTEGRITY OF THE THREADED RODS AS WELL AS 120° SEPARATION.
2. FOR MONOPOLES 13" DIA. OR SMALLER, ONLY (1) ONE NUT AND (1) ONE LOCKWASHER ARE REQUIRED BETWEEN THE TRI-COLLAR BRACKETS. FOR MONOPOLES LARGER THAN 13" DIA., (2) TWO NUTS AND (2) TWO LOCKWASHERS ARE REQUIRED BETWEEN THE TRI-COLLAR BRACKETS.
3. THE MOUNTING SLOTS NOTED WILL ACCOMMODATE 2 3/8"-4 1/2" O.D. MOUNTING PIPES.
4. THREADED ROD MAY BE SHORTENED IF REQUIRED, FIELD CUT AND COLD GALV SPRAY TO SUIT.

UNLESS OTHERWISE SPECIFIED
ALL DIMENSIONS INCLUDE
FINISHES AND ARE IN INCHES
TOLERANCES: FRACTIONS ± 1/16"
ANGLES ± 1/2 DEG.
DECIMALS ± .010"

MATERIAL:
TOLERANCES DO NOT APPLY
TO RAW MATERIAL



TRI-COLLAR BRACKET ASSEMBLY
FOR MONOPOLES (12"-60" DIA.)
(CIRCUMFERENCE 37.7" TO 188.5")

REV	DATE	DRW	CHK	DESCRIPTION
1	1/6/10	MLC	MC	REDRAWN IN AUTOCAD

CONFIDENTIAL
This document and the information contained herein is the confidential trade secret property of Sabre Communications Corporation ("Sabre") and must not be reproduced, copied or used, in whole or in part, for any purpose without the prior written consent of Sabre.
© 2014 Sabre Communications Corporation. All rights reserved.

DATE	8/21/09	SIZE	B	DRAWING NO.	C10112301	REV	1
DRAWN BY	JV	CHECKED BY	MLC	SCALE	None	PAGE	1 OF 1