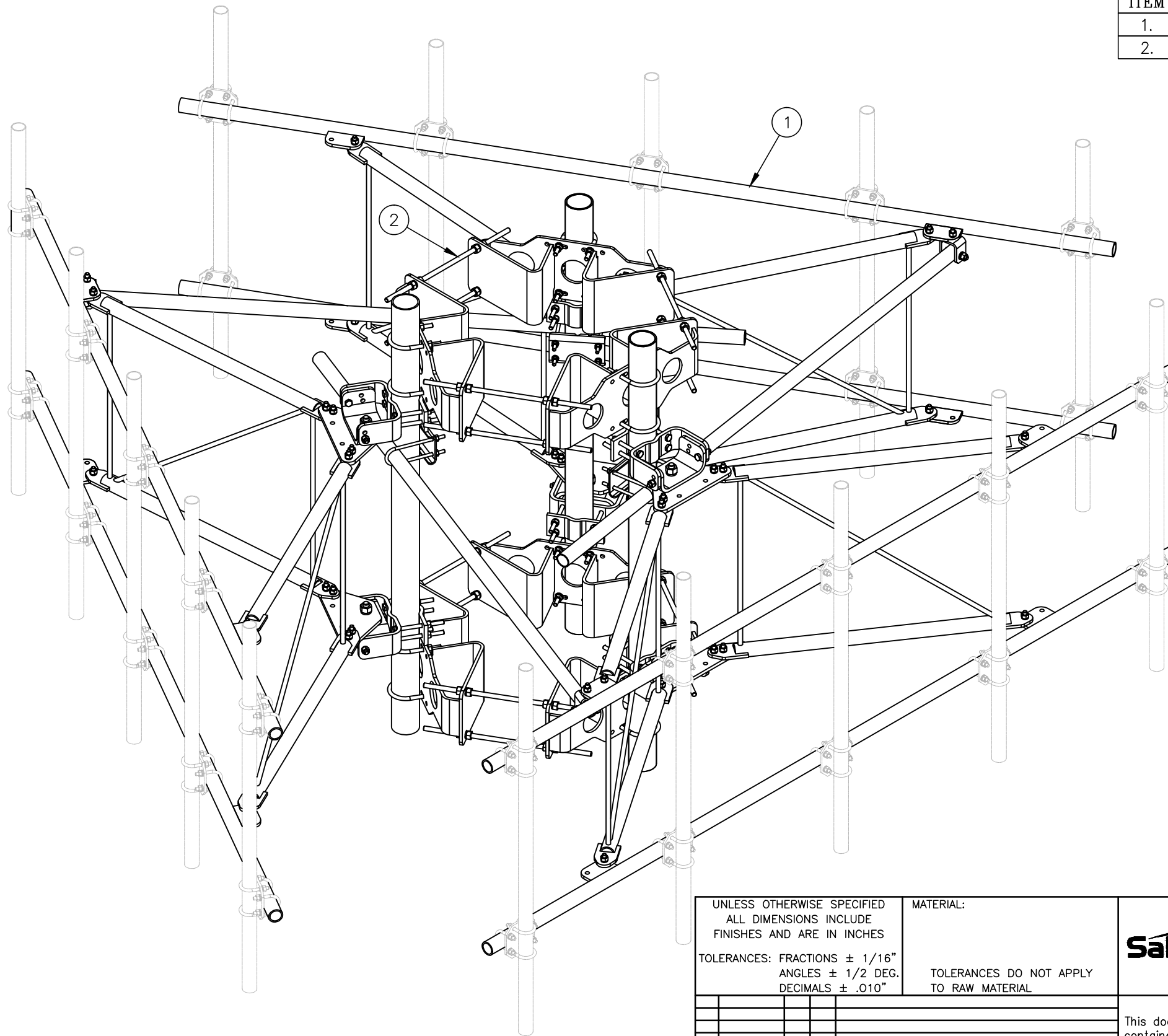




C10857802 12' HD V-BOOM ASSEMBLIES W/TIEBACK

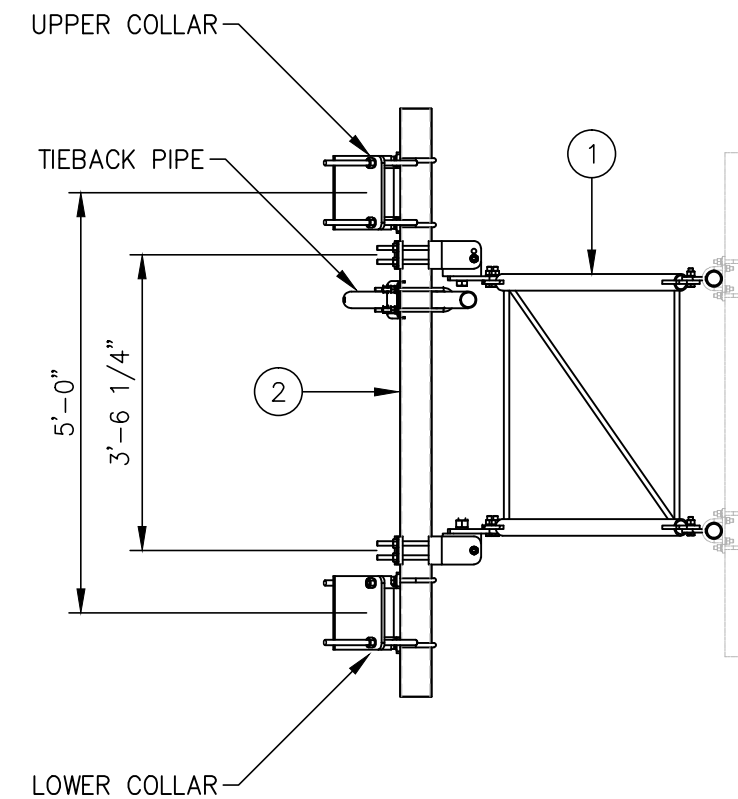
ITEM	QTY.	PART NO.	DESCRIPTION	WEIGHT
1.	3	C10857001C	12' HD V-BOOM ASSEMBLY W/TIE BACK	1386
2.	1	C10899055	4 1/2" O.D. MONOPOLE PIPE MOUNT ASSEMBLY	994
			TOTAL WEIGHT	2380



ISOMETRIC VIEW

NOTES:

1. MOUNTING PIPES & CROSSOVER PLATE KITS MUST BE PURCHASED SEPARATELY.
2. SEE DRAWING C10857001C FOR 12' V-BOOM ASSEMBLY.
3. SEE DRAWING C10899055 FOR 4 1/2" O.D. MONOPOLE PIPE MOUNT ASSEMBLY.



VIEW A-A
FROM PAGE 2

UNLESS OTHERWISE SPECIFIED
ALL DIMENSIONS INCLUDE
FINISHES AND ARE IN INCHES

TOLERANCES: FRACTIONS ± 1/16"
ANGLES ± 1/2 DEG.
DECIMALS ± .010"

MATERIAL:

TOLERANCES DO NOT APPLY
TO RAW MATERIAL

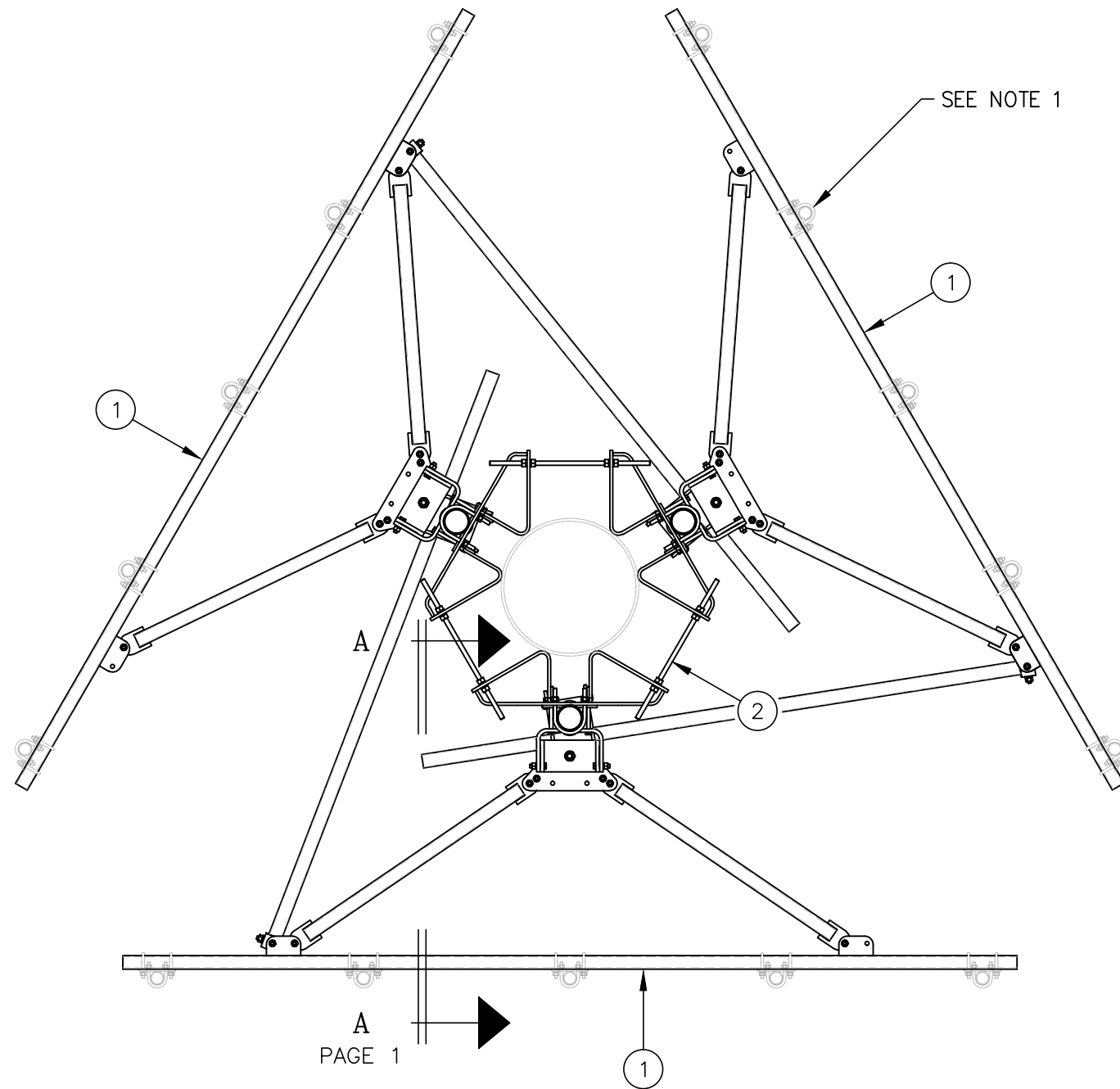


12' HD V-BOOM ASSEMBLIES W/TIEBACK
(3' STANDOFF)
ON MONOPOLE PIPE MOUNT ASSEMBLY
W/NO ANTENNA MOUNTING PIPES

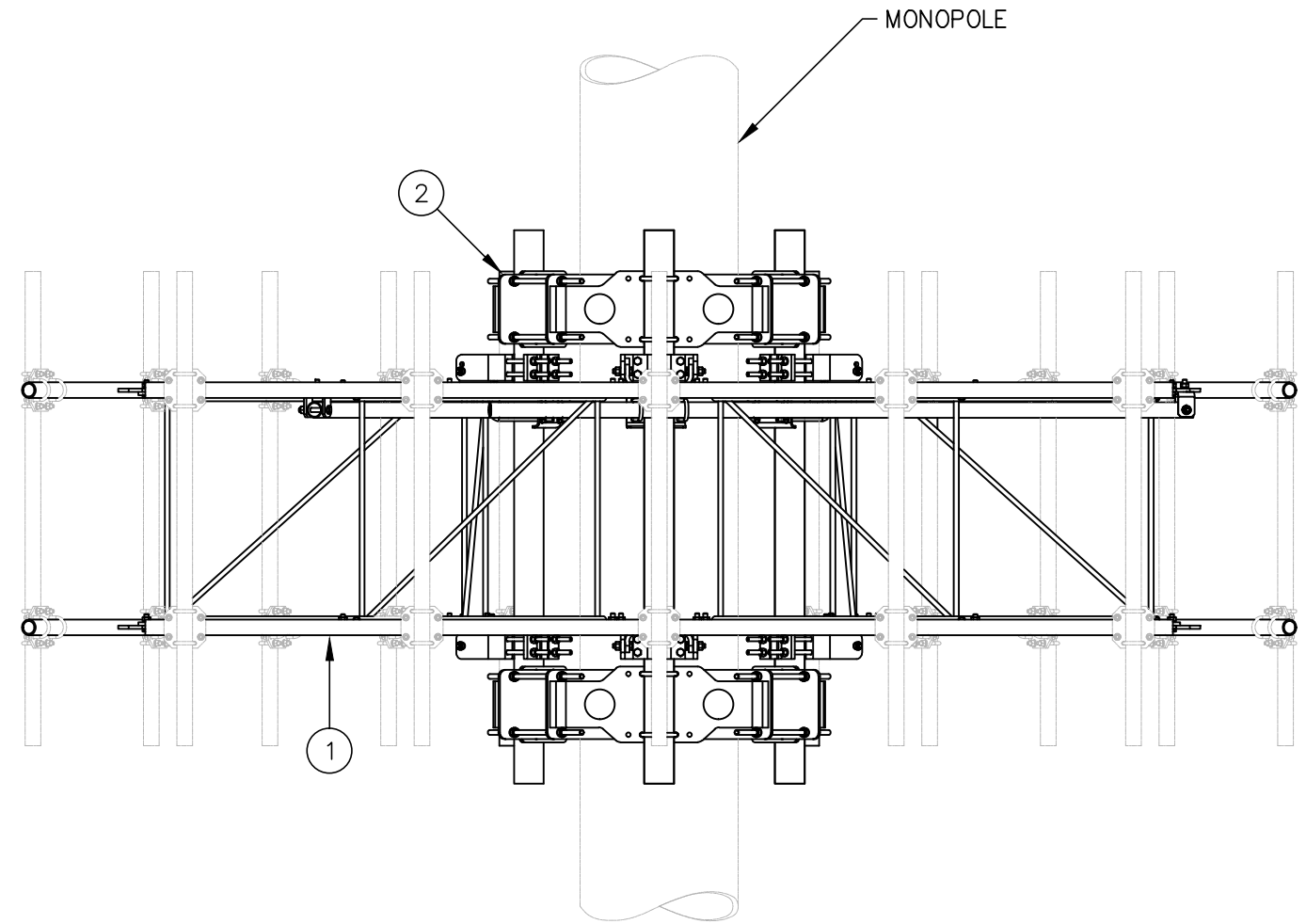
REV	DATE	DRW	CHK	DESCRIPTION

CONFIDENTIAL
This document and the information contained herein is the confidential trade secret property of Sabre Communications Corporation ("Sabre") and must not be reproduced, copied or used, in whole or in part, for any purpose without the prior written consent of Sabre.
© 2018 Sabre Communications Corporation. All rights reserved.

DATE	9/24/18	SIZE	B	DRAWING NO.	C10857802	REV	0
DRAWN BY	WRF			SCALE	None	PAGE	
CHECKED BY	WMN					1 OF 2	



PLAN VIEW



ELEVATION VIEW

UNLESS OTHERWISE SPECIFIED
ALL DIMENSIONS INCLUDE
FINISHES AND ARE IN INCHES
TOLERANCES: FRACTIONS $\pm 1/16"$
ANGLES $\pm 1/2$ DEG.
DECIMALS $\pm .010"$

MATERIAL:
TOLERANCES DO NOT APPLY
TO RAW MATERIAL

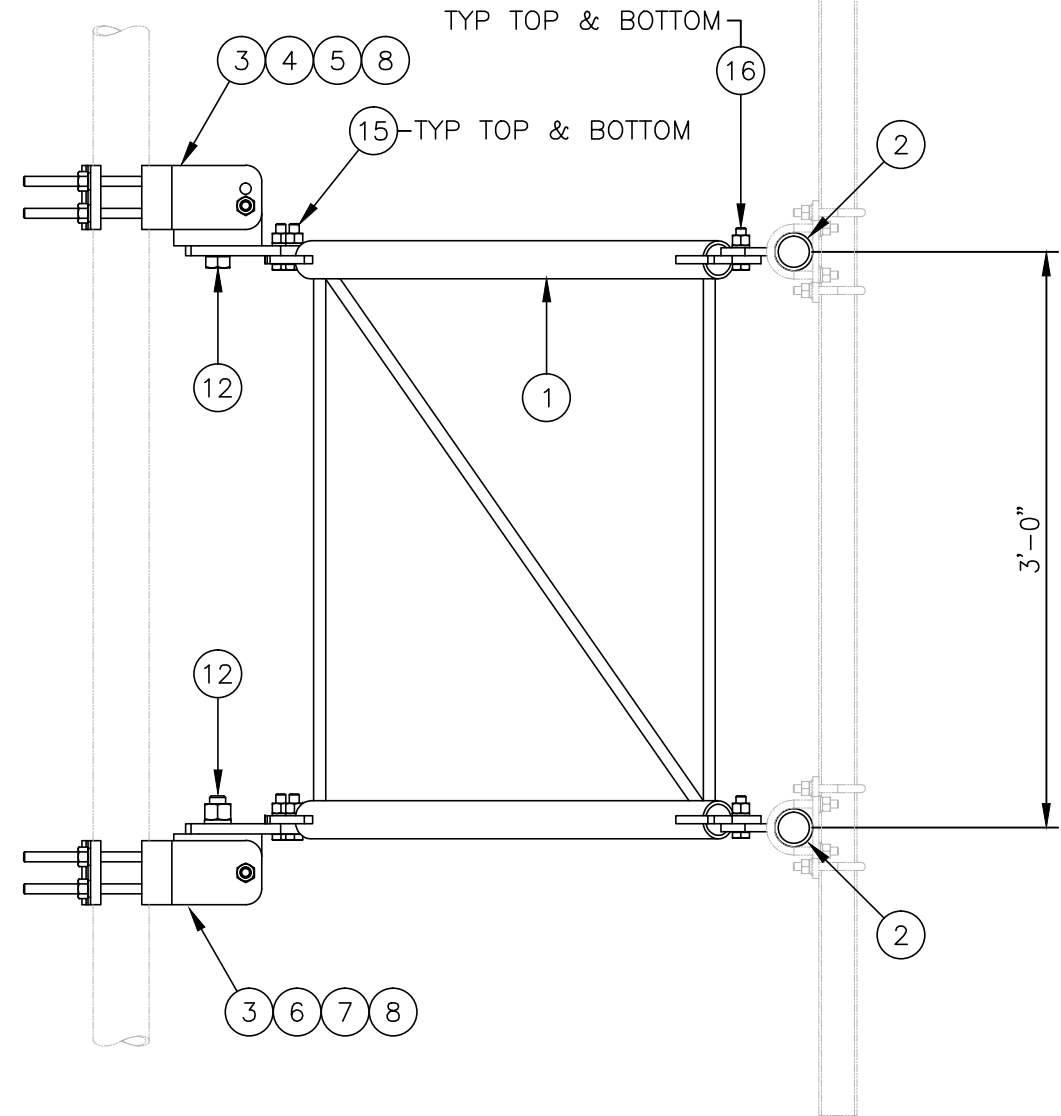
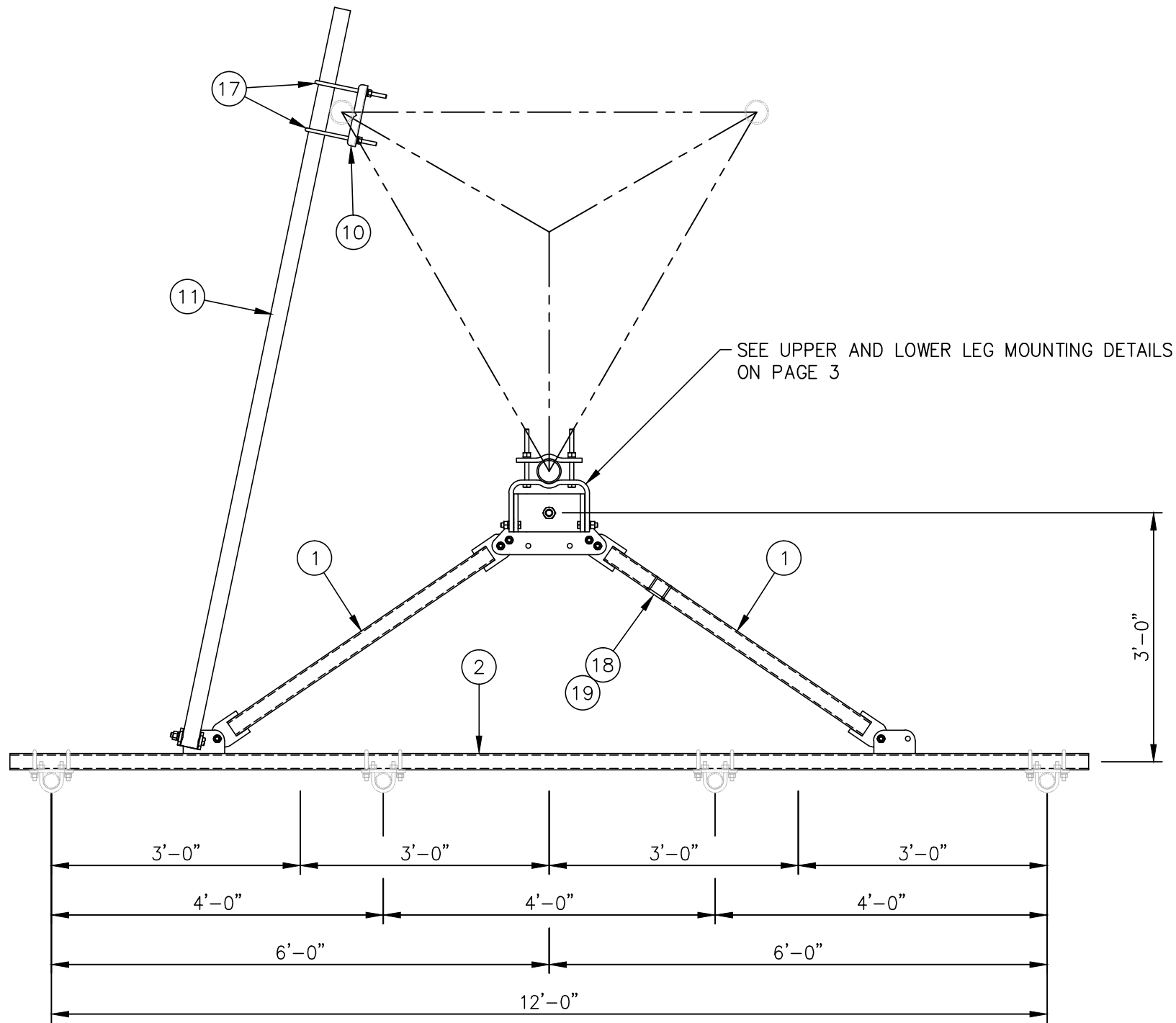


12' HD V-BOOM ASSEMBLIES W/TIEBACK
(3' STANDOFF)
ON MONOPOLE PIPE MOUNT ASSEMBLY
W/NO ANTENNA MOUNTING PIPES

REV	DATE	DRW	CHK	DESCRIPTION

CONFIDENTIAL
This document and the information
contained herein is the confidential trade
secret property of Sabre Communications
Corporation ("Sabre") and must not be
reproduced, copied or used, in whole or in
part, for any purpose without the prior
written consent of Sabre.
© 2018 Sabre Communications Corporation.
All rights reserved.

DATE	09/24/18	SIZE	B	DRAWING NO.	C10857802	REV	0
DRAWN BY	WRF	SCALE		PAGE		None	
CHECKED BY	WMN			2 OF 2			



SIDE VIEW

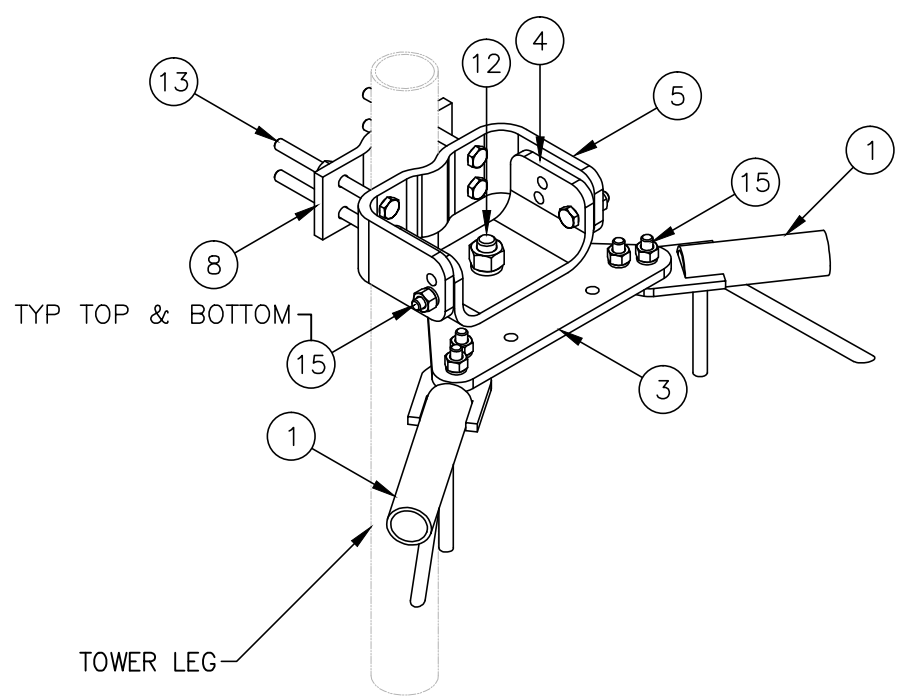
MOUNTING OPTIONS
SHOWING MOUNTING PIPE PLACEMENTS

UNLESS OTHERWISE SPECIFIED ALL DIMENSIONS INCLUDE FINISHES AND ARE IN INCHES				MATERIAL:	
TOLERANCES: FRACTIONS ± 1/16" ANGLES ± 1/2 DEG. DECIMALS ± .010"				TOLERANCES DO NOT APPLY TO RAW MATERIAL	
REV	DATE	DRW	CHK	DESCRIPTION	
4	04/11/17	KLE	EK	REVISED PACKAGING NOTE	
3	10/19/16	KLE	DEL	ADDED INSTALLATION NOTES	
2	02/05/16	DLW	DEL	ADDED PACKAGING NOTE	
1	01/21/16	KLE	EK	REVISED NOTES & ADDED TIEBACK ANGLE RANGE DETAIL	

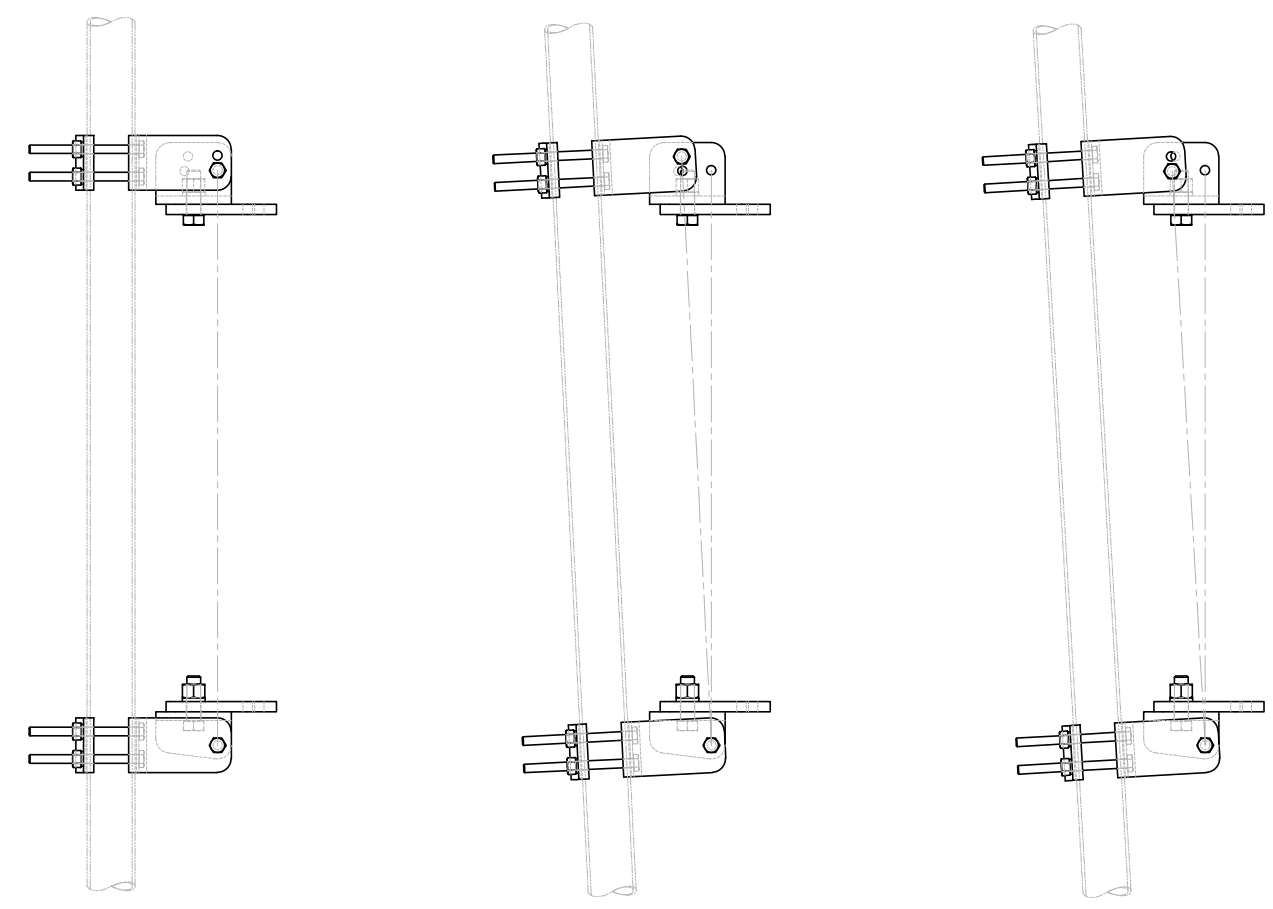
Sabre Industries™
Towers and Poles

CONFIDENTIAL
This document and the information contained herein is the confidential trade secret property of Sabre Communications Corporation ("Sabre") and must not be reproduced, copied or used, in whole or in part, for any purpose without the prior written consent of Sabre.
© 2015 Sabre Communications Corporation. All rights reserved.

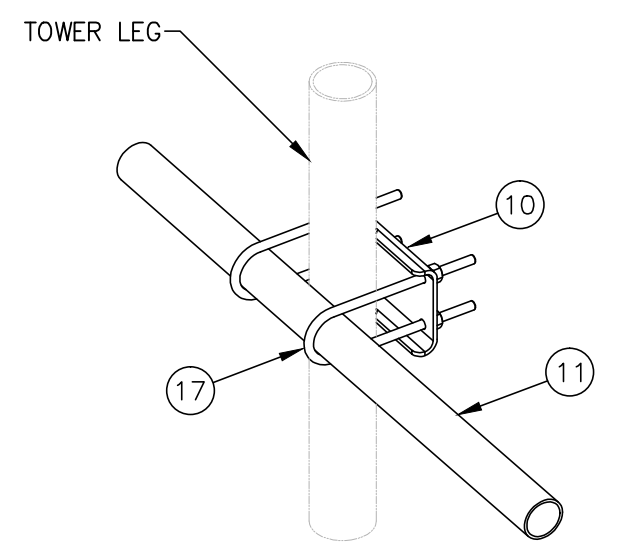
12' HD V-BOOM ASSEMBLY W/TIEBACK (3' STANDOFF) W/NO ANTENNA MOUNTING PIPES					
DATE	12/22/15	SIZE	B	DRAWING NO.	REV
DRAWN BY	WRF			C10857001C	4
CHECKED BY	EK	SCALE	None	PAGE	2 OF 3



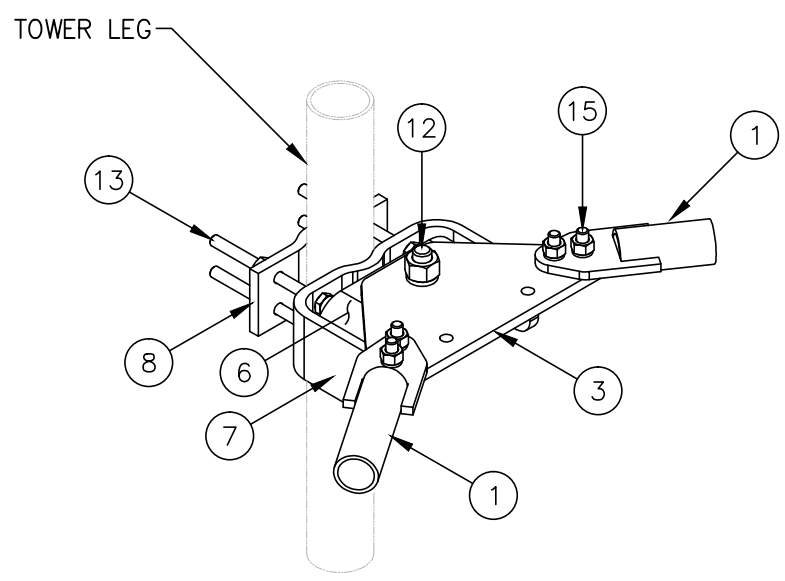
UPPER LEG MOUNTING DETAIL



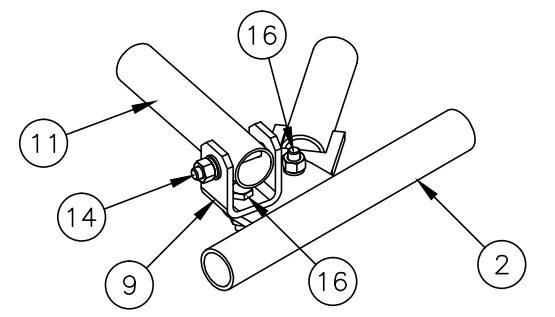
-----PIVOTING OPTIONS-----



**TIE BACK DETAIL
AT TOWER LEG**



LOWER LEG MOUNTING DETAIL



**TIE BACK DETAIL
AT ANTENNA MOUNTING FRAME**

UNLESS OTHERWISE SPECIFIED ALL DIMENSIONS INCLUDE FINISHES AND ARE IN INCHES		MATERIAL:	
TOLERANCES: FRACTIONS ± 1/16" ANGLES ± 1/2 DEG. DECIMALS ± .010"		TOLERANCES DO NOT APPLY TO RAW MATERIAL	
REV	DATE	DRW	CHK
4	04/11/17	KLE	EK
3	10/19/16	KLE	DEL
2	02/05/16	DLW	DEL
1	01/21/16	KLE	EK
DESCRIPTION			

Sabre Industries™
Towers and Poles

CONFIDENTIAL
This document and the information contained herein is the confidential trade secret property of Sabre Communications Corporation ("Sabre") and must not be reproduced, copied or used, in whole or in part, for any purpose without the prior written consent of Sabre.
© 2015 Sabre Communications Corporation. All rights reserved.

12' HD V-BOOM ASSEMBLY W/TIEBACK (3' STANDOFF) W/NO ANTENNA MOUNTING PIPES			
DATE	12/22/15	SIZE	B
DRAWN BY	WRF	DRAWING NO.	C10857001C
CHECKED BY	EK	SCALE	None
		PAGE	3 OF 3
		REV	4

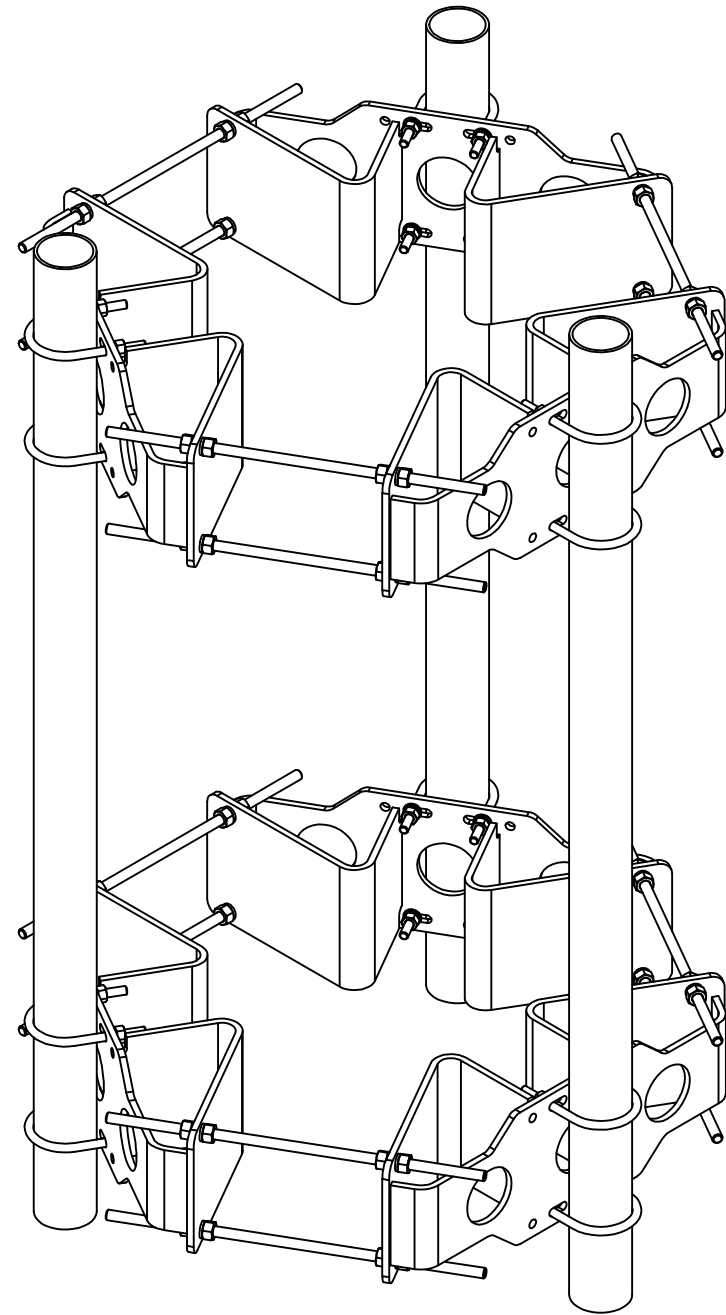


NOTE:

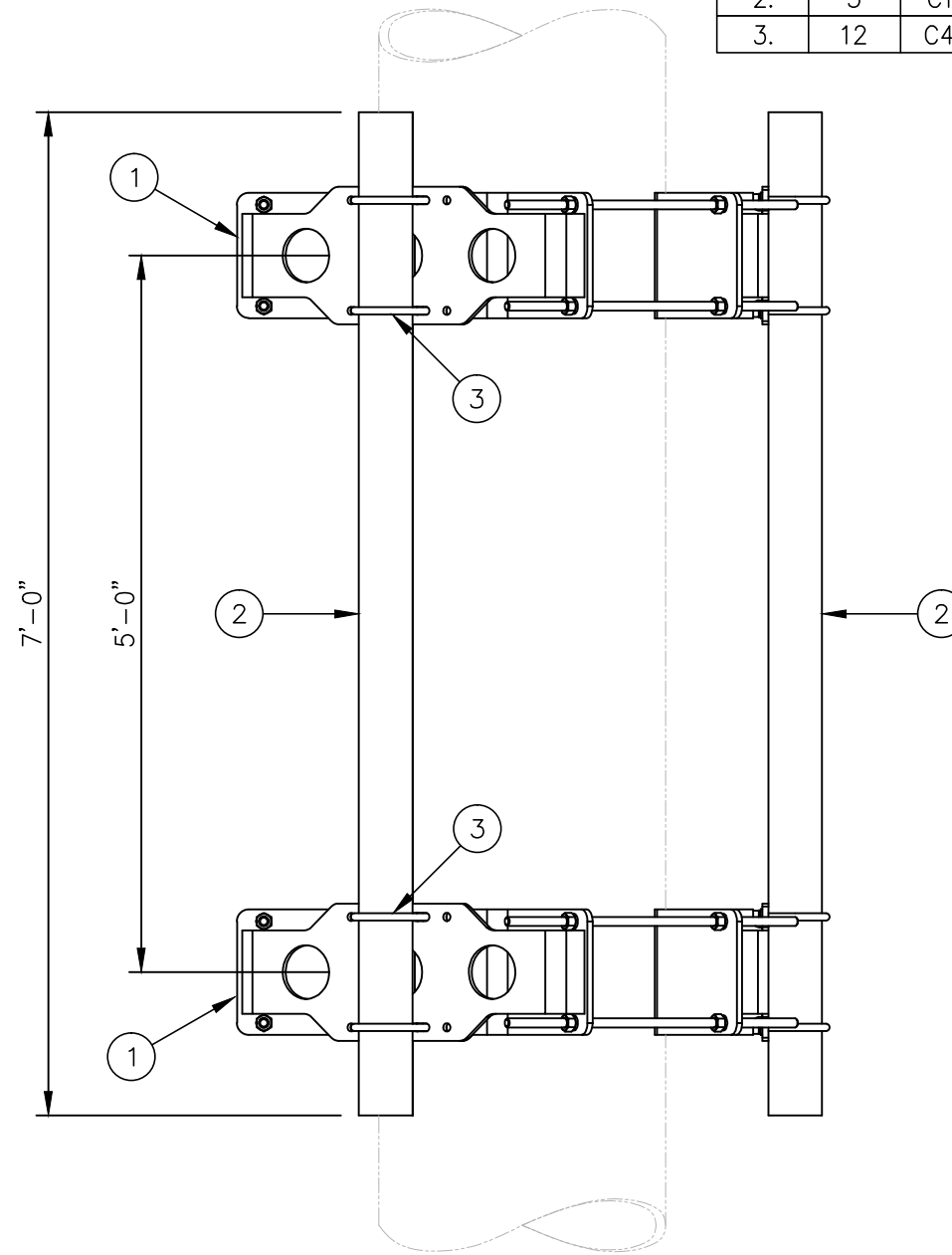
SEE DRAWING C10112378 FOR INSTALLATION OF TRI-COLLAR BRACKET ASSEMBLY

C10899055 4 1/2" O.D. PIPE MOUNT ASSEMBLY

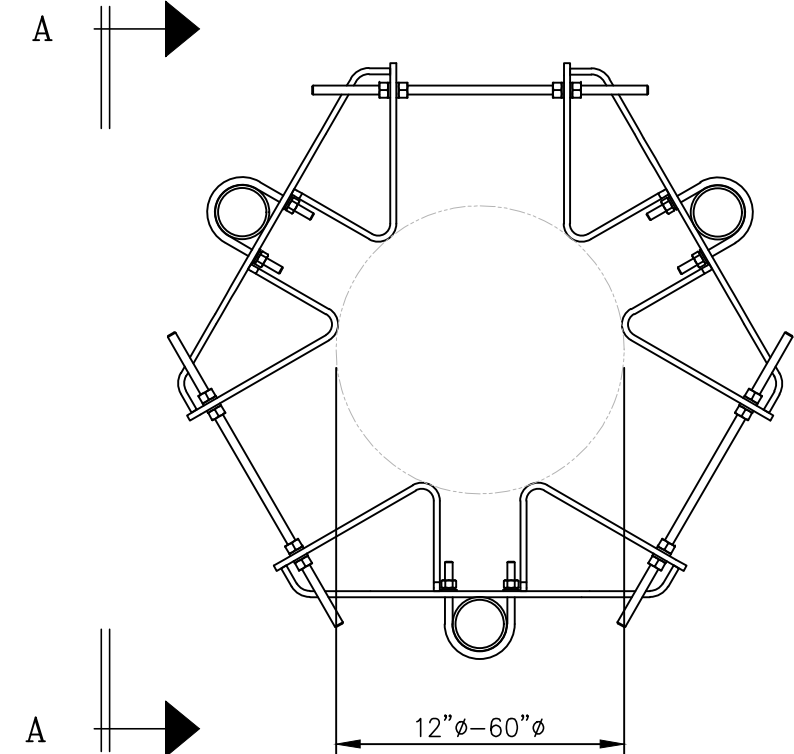
ITEM	QTY.	PART NO.	DESCRIPTION	WEIGHT
1.	2	C10112378	TRI-COLLAR BRACKET ASSEMBLY	732
2.	3	C10901407	PIPE, 4 1/2 O.D. X .237 X 7'-0	236
3.	12	C40034032	U-BOLT ASSEMBLY, 5/8 ϕ X 5 3/16 C-C	26
TOTAL WEIGHT				994



ISOMETRIC VIEW



VIEW A-A



PLAN VIEW

UNLESS OTHERWISE SPECIFIED
ALL DIMENSIONS INCLUDE
FINISHES AND ARE IN INCHES

TOLERANCES: FRACTIONS $\pm 1/16"$
ANGLES $\pm 1/2$ DEG.
DECIMALS $\pm .010"$

MATERIAL:

TOLERANCES DO NOT APPLY
TO RAW MATERIAL



**4 1/2" O.D. PIPE MOUNT ASSEMBLY
FOR MONOPOLES
(FITS 12" TO 60" DIAMETER)**

REV	DATE	DRW	CHK	DESCRIPTION
1	02/03/17	WRF	KLE	COLLAR WAS C10112301

CONFIDENTIAL
This document and the information
contained herein is the confidential trade
secret property of Sabre Communications
Corporation ("Sabre") and must not be
reproduced, copied or used, in whole or in
part, for any purpose without the prior
written consent of Sabre.
© 2016 Sabre Communications Corporation.
All rights reserved.

DATE	01/26/16	SIZE	B	DRAWING NO.	C10899055	REV	1
DRAWN BY	WRF	CHECKED BY	DLW	SCALE	None	PAGE	1 OF 1