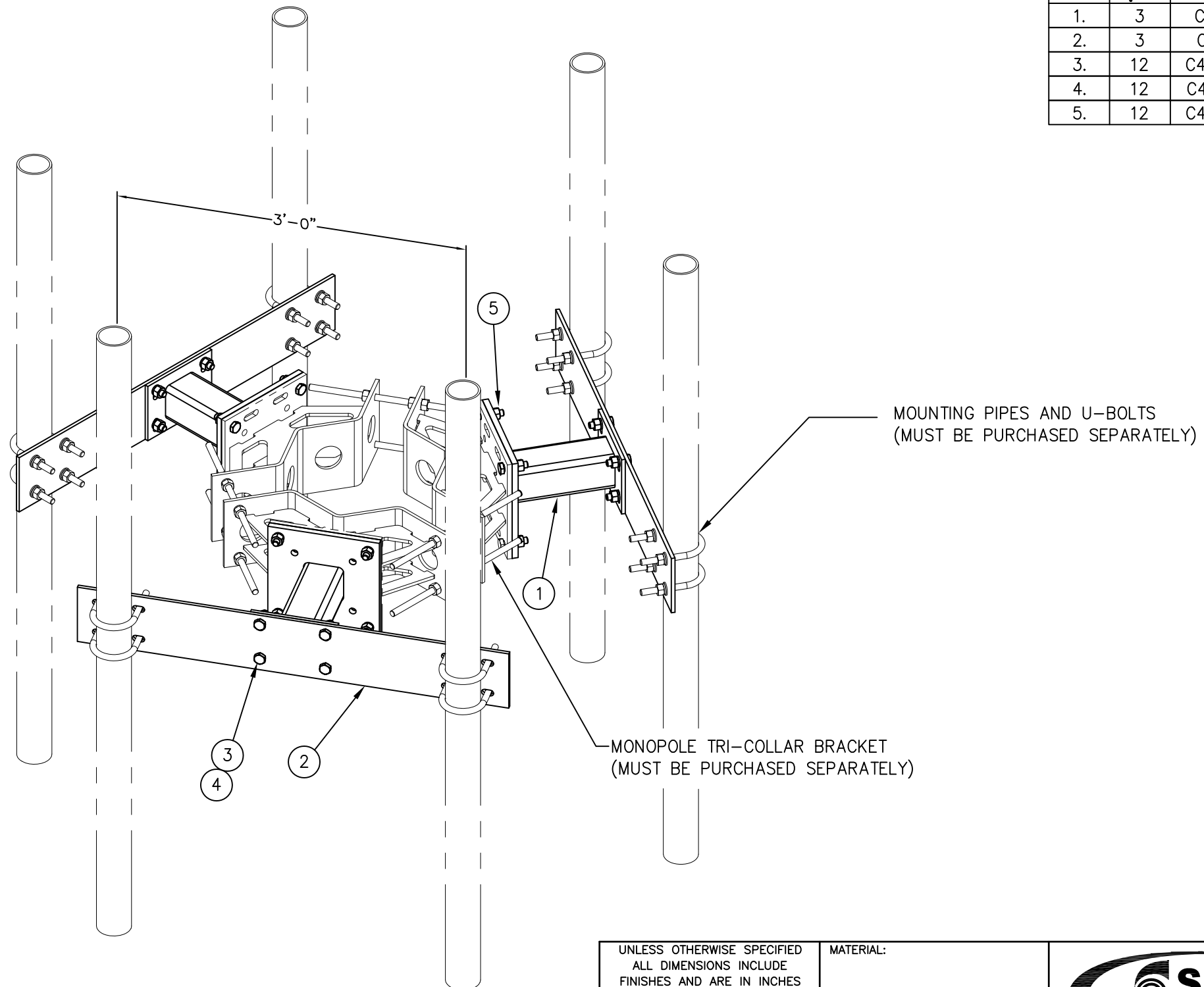




C10114300 1' STANDOFF W/3' SEPARATION

ITEM	QTY.	PART. NO.	DESCRIPTION	WEIGHT
1.	3	CW00484	WELDMENT, 1' STANDOFF	114
2.	3	CS02100	PLATE, 3' SEPARATION	131
3.	12	C40026024	BOLT ASSEMBLY, 5/8 $\phi$ X 2 1/4 A325	6
4.	12	C40031003	FLATWASHER, 5/8 $\phi$	1
5.	12	C40026025	BOLT ASSEMBLY, 5/8" $\phi$ X 2 1/2" A325	6
TOTAL WEIGHT				258



ISOMETRIC VIEW

UNLESS OTHERWISE SPECIFIED ALL DIMENSIONS INCLUDE FINISHES AND ARE IN INCHES		MATERIAL:	
TOLERANCES: FRACTIONS $\pm 1/16"$ ANGLES $\pm 1/2$ DEG. DECIMALS $\pm .010"$		TOLERANCES DO NOT APPLY TO RAW MATERIAL	
REV	DATE	DRW/CHK	DESCRIPTION

**CONFIDENTIAL**  
This document and the information contained herein is the confidential trade secret property of Sabre Communications Corporation ("Sabre") and must not be reproduced, copied or used, in whole or in part, for any purpose without the prior written consent of Sabre.  
© 2009 Sabre Communications Corporation. All rights reserved.

1' STANDOFF WITH 3' SEPARATION NO ANTENNA MOUNTING PIPES			
DATE	7/15/09	SIZE	B
DRAWN BY	JV	DRAWING NO.	C10114300
CHECKED BY	MC	SCALE	None
		REV	0
		PAGE	1 OF 1